

VISTA-FOLD 70A

Bottom rolling sliding folding hardware for external weatherproof doors up to 70kg.

FEATURES:

- Fully weatherproof system (tested to AAAMSA A1)
- Equal width leaves
- Quality proven hardware
- Uses standard aluminium siprofront door profiles
- Non corrosive hardware

SPECIFICATIONS:

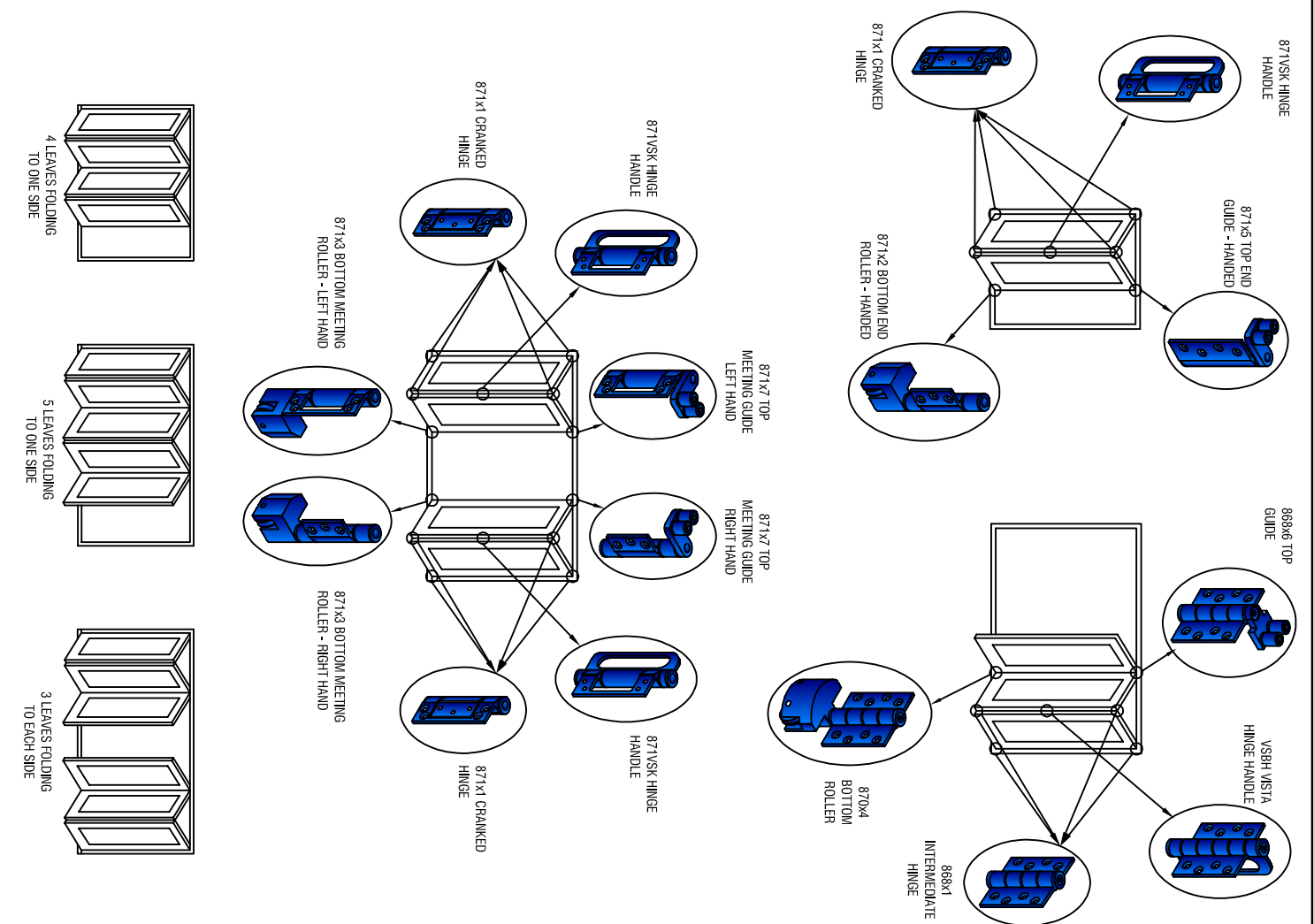
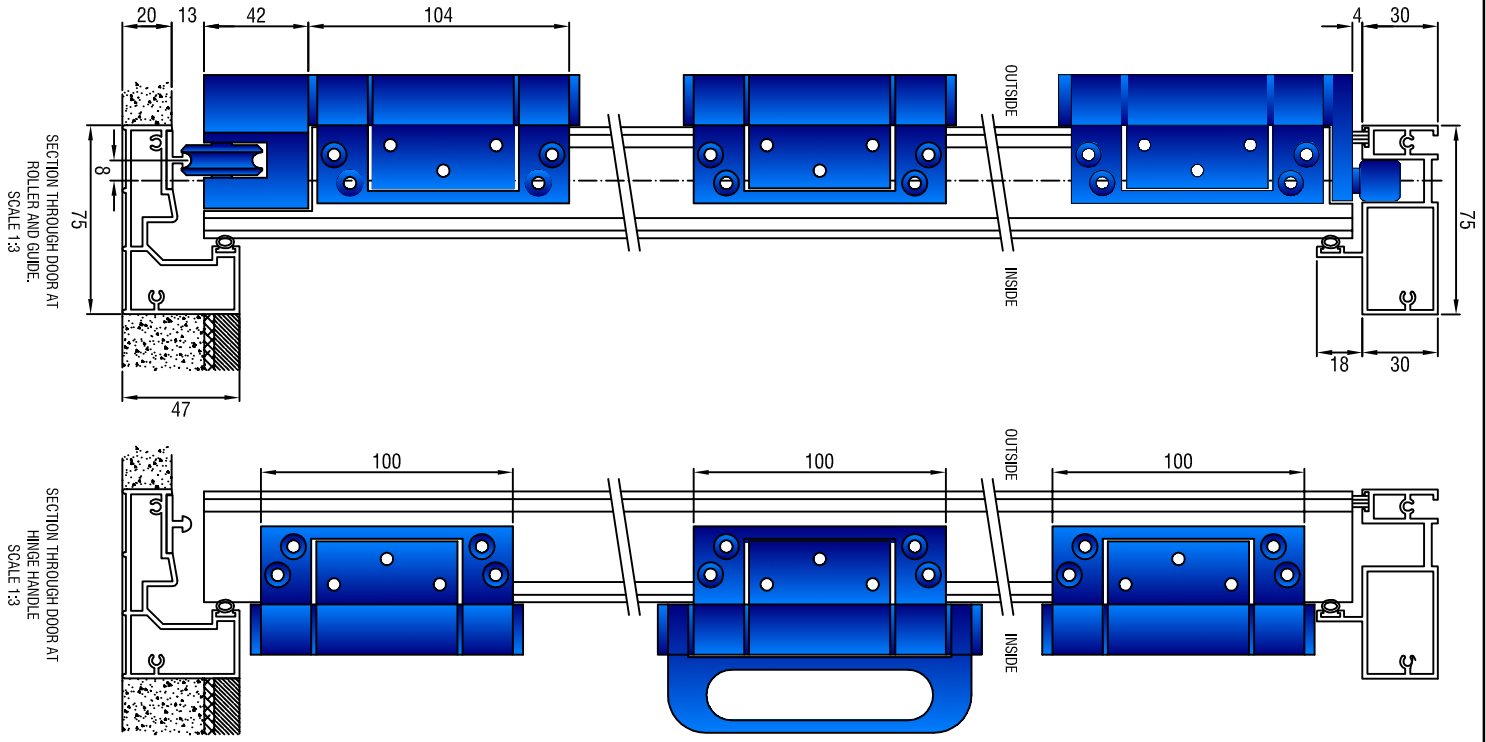
Hardware fits standard 44mm siprofront door profiles with Vista-fold frames
 Max leaf mass: 70kg
 Max leaf height: 2700mm
 Max leaf width: 900mm
 Recommended: 2,3,4 or max 5 leaves hinged together

COMPONENTS:

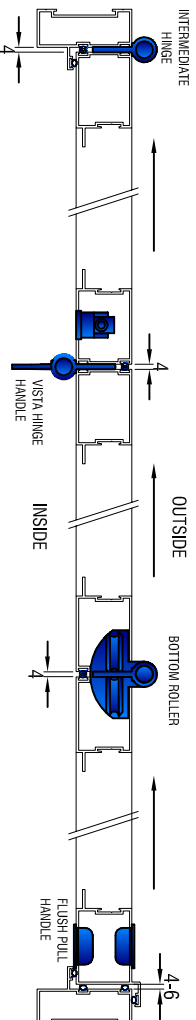
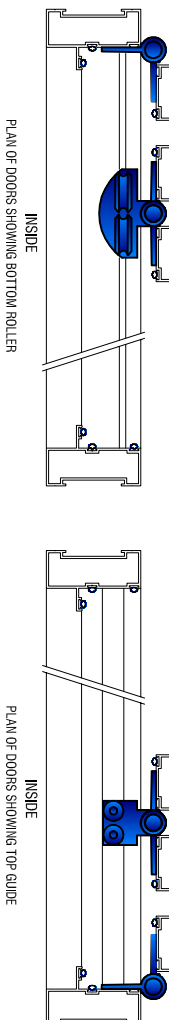
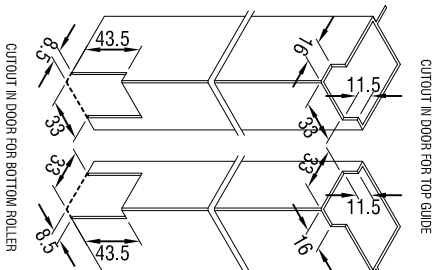
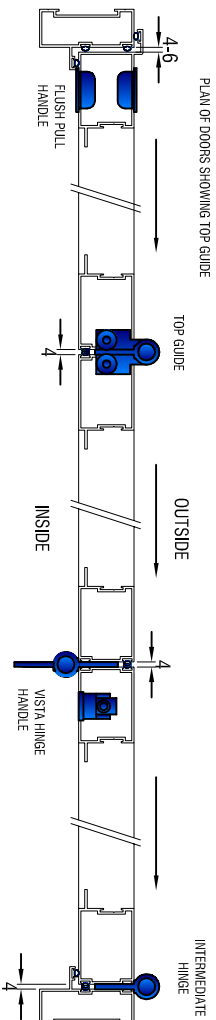
- 3/5 LEAF: 868x6 Top guides, 870x1 Bottom rollers, 868x1 Intermediate hinges, VSKH Hinge Handle, 2/4 LEAF: (Handed) 871X5 Top guides (LH/RH), 871X2 Bottom rollers (LH/RH), 871X1 Intermediate hinges, 871VSK Hinge Handle
- FITTINGS:**
- VF01 Side frame
 - VF02 Top frame
 - VF03 Bottom frame
 - CL34 Bottom track
 - 868B Bubble seal
 - DO90 Woolpile
 - 4771 F/R Double throw flush bolt
 - EB1 Holdback catch

Note: All fittings suitable for all coastal applications.

Hillaldam Coburn Systems (Pty) Ltd.
 P O Box 4664, Johannesburg 2000,
 South Africa
 Tel: (+2711) 626 1001
 Fax: (+2711) 626 1341
 Email: info@hillaldam.co.za
 Web: www.hillaldam.co.za



3 LEAVES FOLDING TO ONE SIDE - UNEVEN/ODD NUMBER OF PANELS



PLAN OF DOORS SHOWING BOTTOM ROLLER

Calculations - Uneven Panel - 3; 5; 7

Where:
 PW = Panel Width
 OW = Opening Width
 P = No. of Panels
 TF = Thickness of frame

Calculations - Uneven Panel - 3; 5; 7

SINKLESS HINGES:

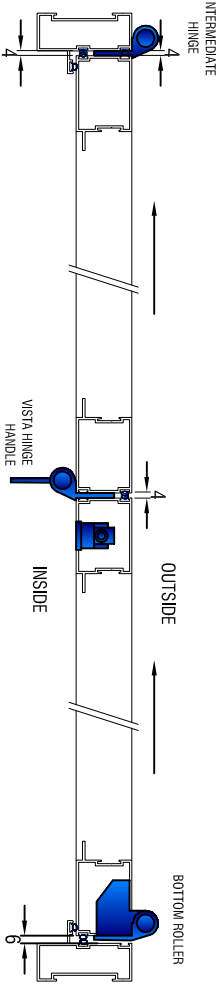
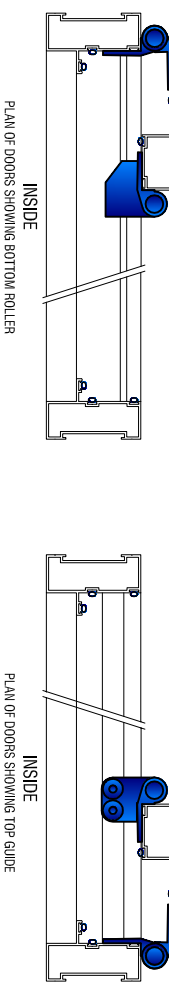
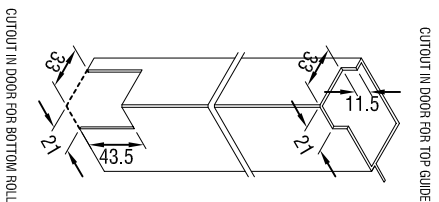
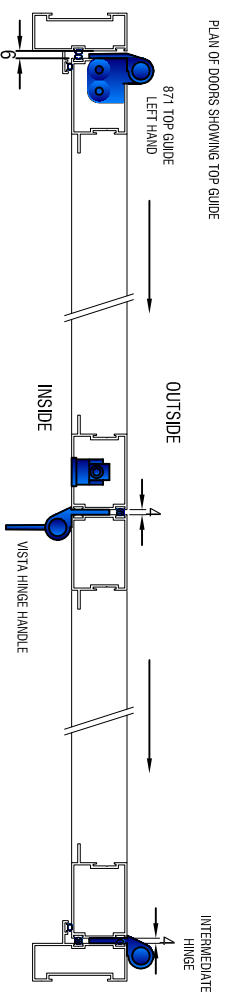
For an opening using sinkless hinges:
 A 7mm gap between panels is allowed for and a 7mm gap between the hinge leaf and the jamb to accommodate the lock.
 Panel Width (PW) = $\frac{OW - (2 \times TF) - (P \times A) - 7}{P}$

Calculations - Uneven Panel - 3; 5; 7

BUTT HINGES:

For an opening using butt hinges:
 A 7mm gap between panels is allowed for and a 7mm gap between the hinge leaf and the jamb to accommodate the lock.
 Panel Width (PW) = $\frac{OW - (2 \times TF) - (P \times A) - 7}{P}$

2 LEAVES FOLDING TO ONE SIDE - EVEN NUMBER OF PANELS



PLAN OF DOORS SHOWING BOTTOM ROLLER

Calculations - Even Panel - 2; 4

Where:
 PW = Panel Width
 OW = Opening Width
 P = No. of Panels
 TF = Thickness of frame

Calculations - Even Panel - 2; 4

For an opening using cranked hinges and all doors of even width:

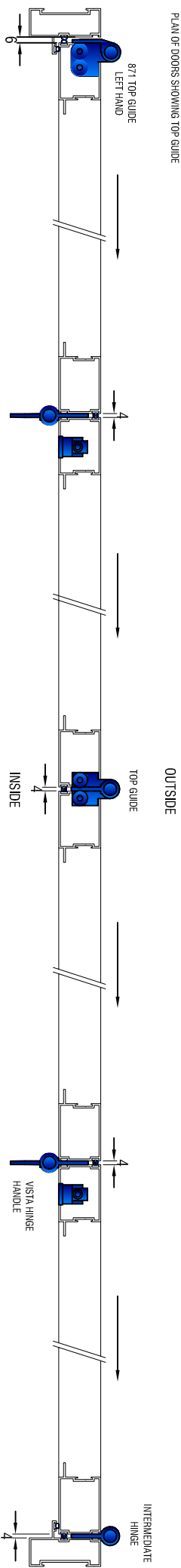
Panel Width (PW) = $\frac{OW - (2 \times TF) - (P \times A) - 6}{P}$

For an opening using non-cranked hinges where the end door is 12mm longer:

Once you have PW for the non-cranked formula, simply add back 12mm to each end panel to determine its width.

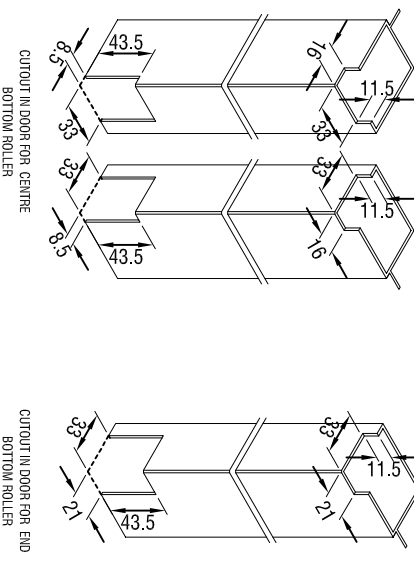
4 LEAVES FOLDING TO ONE SIDE - EVEN NUMBER OF PANELS

PLAN OF DOORS SHOWING TOP GUIDE



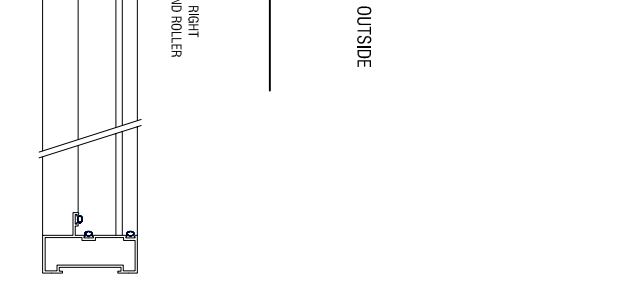
CUTOUT IN DOOR FOR CENTRE TOP GUIDE

CUTOUT IN DOOR FOR END TOP GUIDE



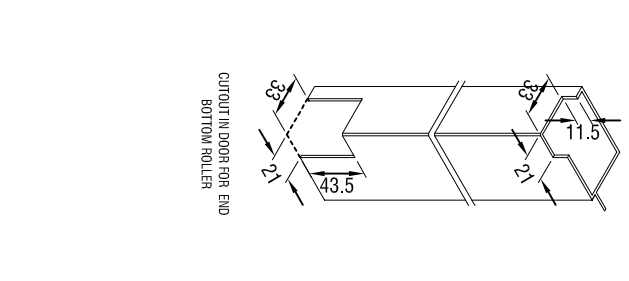
PLAN OF DOORS SHOWING BOTTOM ROLLER

INSIDE



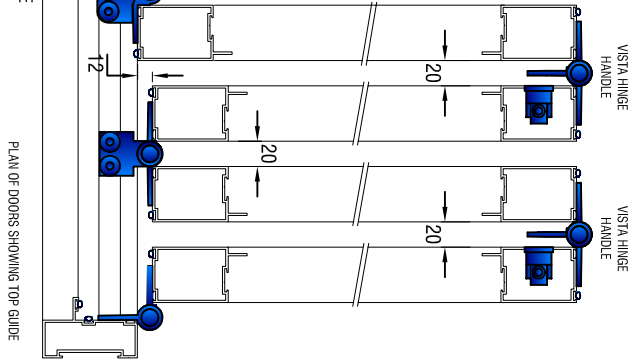
PLAN OF DOORS SHOWING BOTTOM ROLLER

INSIDE



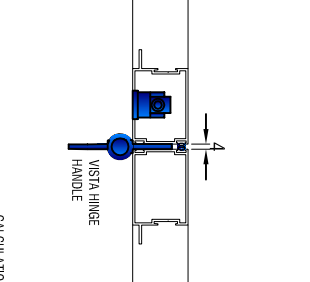
PLAN OF DOORS SHOWING TOP GUIDE

INSIDE



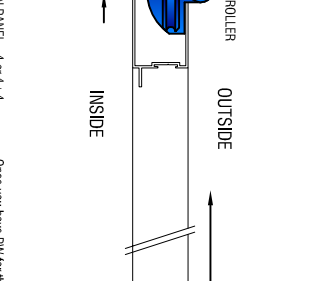
PLAN OF DOORS SHOWING BOTTOM ROLLER

INSIDE



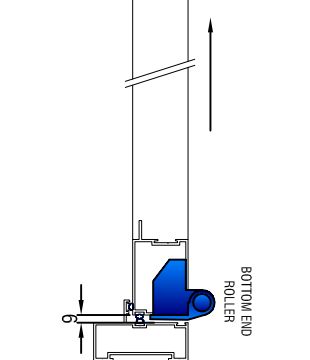
PLAN OF DOORS SHOWING BOTTOM ROLLER

INSIDE



PLAN OF DOORS SHOWING TOP GUIDE

INSIDE



CALCULATIONS - EVEN PANEL - 4 or 4+4

Where:

PW=Panel Width

ENP=End Panel Width

OW=Opening Width

P=No. of Panels

E=No. of End Panels

TF=Thickness of Frame

10mm clearance to allow kick of doors

CALCULATIONS - EVEN PANEL - 4 or 4+4

For an opening using 88x1 stainless hinges

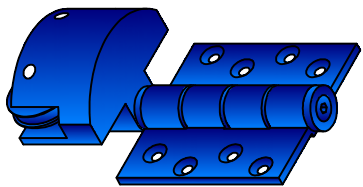
where the end door is 12mm longer:

$$PW = OW - (2 \times TF) - (P \times 4) - 6 - (12 \times E)$$

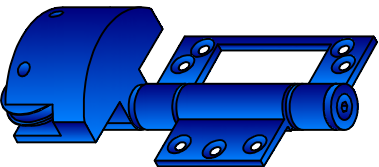
$$PW = OW - 12$$

Once you have PW for the non-cranked formula, simply add back 12mm to each end panel to determine its width.

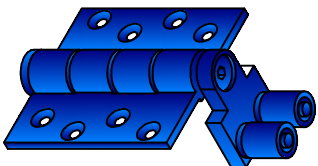
VISTAFOLD AND VISTADUO GUIDES, ROLLERS AND HINGES



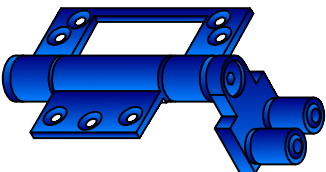
870x4 Butt Hinge Roller



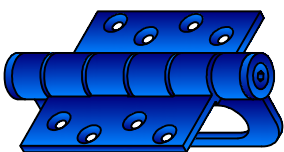
870x4 Sinkless Hinge Roller



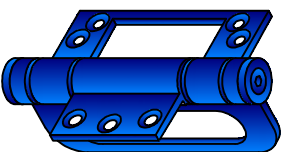
868x6 Butt Hinge Guide



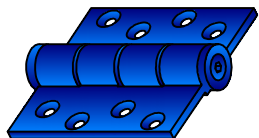
868x6 Sinkless Hinge Guide



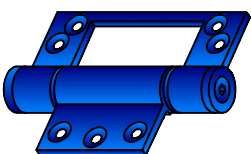
Vista Butt Hinge Handle



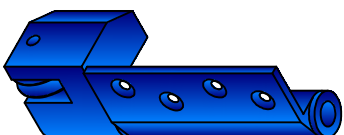
Vista Sinkless Hinge Handle



868x1 Butt Hinge



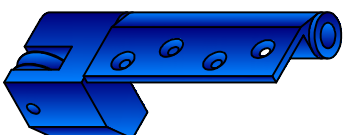
868x1 Sinkless Hinge



871x2 End Roller RH



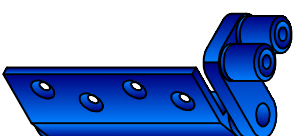
871x3 Meeting End Roller RH



871x2 End Roller LH



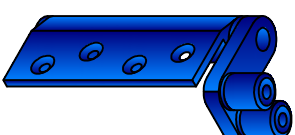
871x3 Meeting End Roller LH



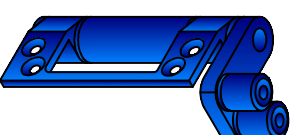
871x5 End Guide RH



871x7 End Guide RH



871x5 End Guide LH



871x7 End Guide LH

TOP VIEW OF VISTADUO END AND MEETING GUIDE AND ROLLERS

871x2 End Roller LH Open Top



871x2 End Roller RH Open Top

871x5 End Guide RH Open Top



871x5 End Guide LH Open Top



871x1 Cranked Hinge



871 VSK Hinge Handle